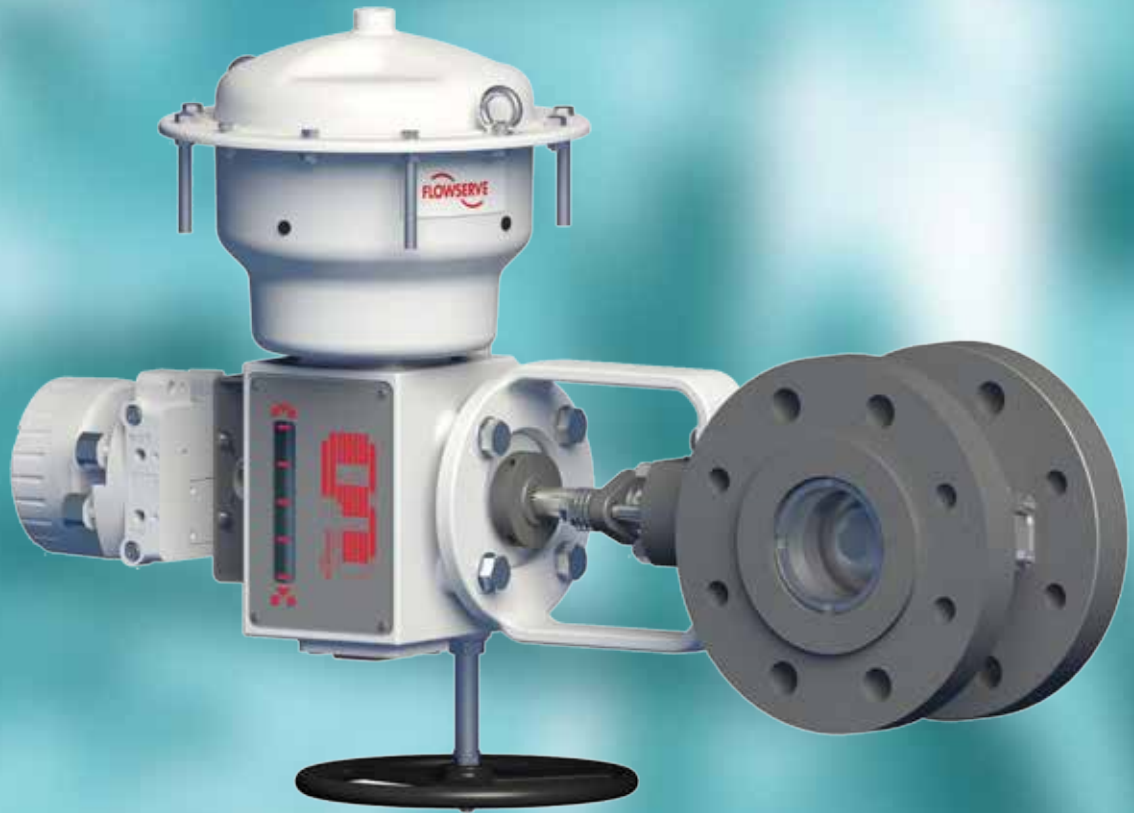




## ***Valtek MaxFlo 4 Eccentric Rotary Plug Control Valve***



***Experience In Motion***



## Flowserve® – Solutions to keep you flowing

Flowserve is one of the world's leading providers of control valves. Our engineers work with customers to understand even the most challenging applications. This way, Flowserve partners with customers to develop industry leading technical solutions that help customers keep their process flowing.



## MaxFlo 4 Eccentric Rotary Plug Control Valve

The Flowserve Valtek MaxFlo 4 control valve is a high performance eccentric rotary plug valve designed for the process industry. It features a large capacity, standard hardened trim and superior shaft blow-out protection. This valve is available in sizes 1 through 12 inches, ASME Class 150, 300 and 600 as well as DIN PN 10, PN16, PN 25, PN40 and PN63.

An optional ISA 75.08.01 or DIN EN 558 series 1 long-pattern body makes this valve an easy drop-in replacement for a globe control valve.

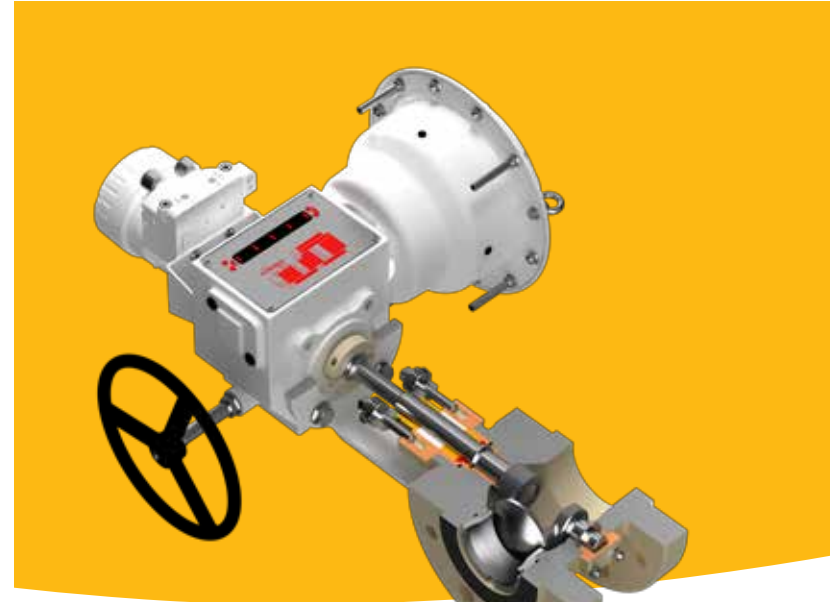
The MaxFlo 4 is suitable for most applications; its control valve features include:

- Highest Rated Cv
- Precise Control
- Reliable Shut-off
- Most Current Safety Standards
- Fugitive Emissions Elimination
- Integral Noise Reduction Plates



### MaxFlo 4 Valve Specifications

OPTIONS	DIN	ASME
Sizes	DN 25, 40, 50, 80, 100, 150, 200, 250 and 300	NPS 1, 1.5, 2, 3, 4, 6, 8, 10 and 12
Pressure Classes	PN 10, 16, 25, 40 and 63	Class 150, 300 and 600
End Connection	EN 1092-1 (Form B1, D, F, B2)—Flanged & Wafer	B16.5 (Raised Face, RTJ)—Flanged & Wafer
Body Materials	Carbon steel: 1.0619	Carbon Steel: A216-WCC
	Stainless Steel: 1.4408	Stainless steel: A351-CF8M
Face to Face	EN 558: 2012-03 series 36 (short) EN 558: 2012-03 series 1 (globe)	ISA 75.08.02 (short) ISA 75.08.01 (globe)
Packing	PTFE V-Ring, Braided PTFE, Graphite, Sureguard XT, Garlock SVS, LATTYflon 3265 LM and LATTYgraf 6995 NG (meeting requirements for TA-Luft, ISO 15848-1 and EPA)	
Packing Type	Single, Twin, Vacuum, Live Loaded, Fire Safe and O-Ring	
Temperature	-100°C to 400 °C (-148°F to 750°F)	
Plug and Seat	Standard, Hardened and Soft Seat	
Shut-Off	ANSI/FCI 70-2-2006: Class IV (metal seat) and VI (soft seat)	
Rangeability	Up to 160:1	
Trim	100%, 40% (NPS sizes 1 – 6, DN 25 – 150), 75% (NPS sizes 8 - 12, DN 200 – 300)	
Actuator	NR Diaphragm, VR Piston and SuperNova Rack & Pinion (optional: manual, electric)	
Positioner	Logix 420 (optional: Logix 3000, Logix 500, XL-90)	



### ***Highest Rated Cv***

The unique design of the MaxFlo 4 shaft and plug provide as much as 70% more Cv compared to the competition. This allows customers to get more flow when needed and sometimes allows for a smaller, more economical valve to be used.

### ***Precise Control***

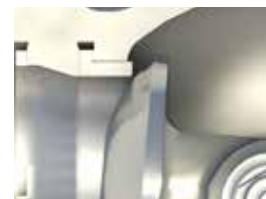
The MaxFlo 4 polygon connection between the shaft and plug is a proven superior method for making demanding mechanical connections that are stronger, more precise and have a substantially longer service life. This reduces backlash and the high strength of the polygon connections makes them capable of withstanding greater shock loads under extreme torque reversal conditions.

### ***Reliable Shut-off***

The MaxFlo 4 double-offset eccentric plug rotates into the seat at an angle that eliminates sliding over the seat surface. This design reduces seat wear, and thereby decreases maintenance requirements and costs. At the same time, a tight ANSI Class VI shutoff is easily obtainable using the soft seat design.

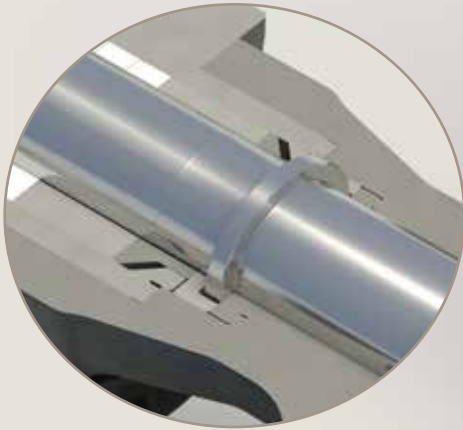
### ***Safety Standard***

The shaft is designed to meet the safety requirements of industry standard ASME B16.34 to ensure that the shaft is retained even if the actuator is removed when the valve is still pressurized. This is standard on every MaxFlo 4 to provide our customers with confidence and safety.



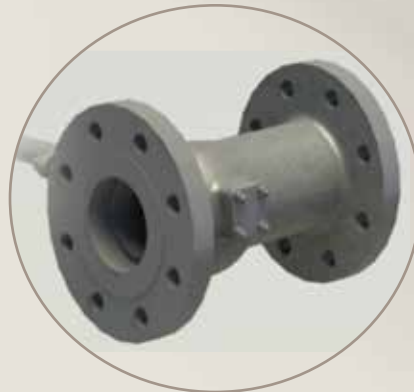


**Blow out proof shaft** required by ASME B16.34 2004 Sec 6.5 ensures safety. Standard on every MaxFlo 4.

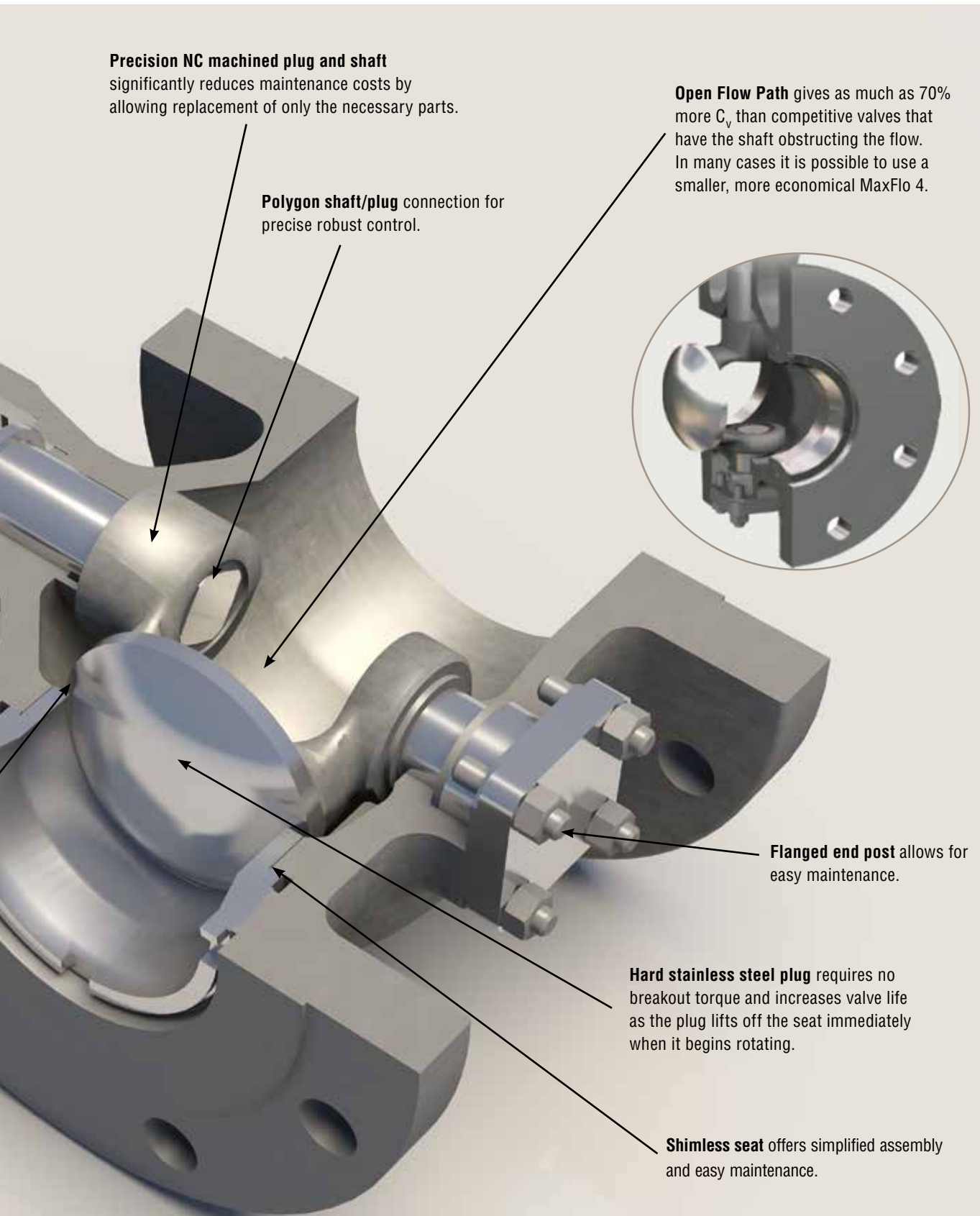


**Separate bonnet** ensures positive anti-blowout, accommodates multiple packing options, and offers flexibility in material selection for demanding applications.

An economical flangeless configuration of the MaxFlo 4 is also available. The standard flanged body is the same length. To replace existing globe valves we offer the flanged body with the same face to face length as a globe valve (Per ISA 75.08.01).



**Heavy-duty rigid metal seat**, with hardfaced or soft-seat options, provides tighter shutoff, and easier maintenance. Available in full area and several reductions in every size to suit your process needs.



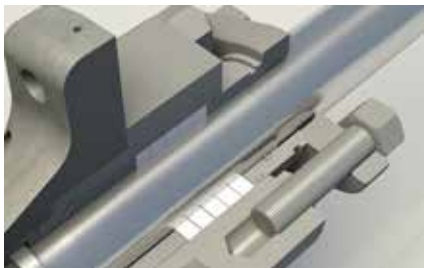


*Driving  
Innovation for  
Continuous  
Process  
Industries*



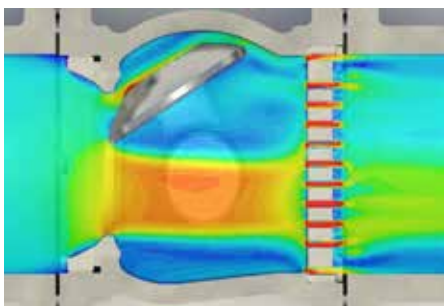
### ***Eliminate Fugitive Emissions***

Special Flowserve packing sets, such as SureGuard XT live loaded packing, are available to control fugitive emissions. Packing options include: PTFE V-Ring, Braided PTFE, Graphite, Sureguard XT, Garlock SVS, LATTYflon 3265 LM and LATTYgraf 6995 NG (meeting requirements for TA-Luft, ISO 15848-1 class B and A, and EPA standards).



### ***Integral Noise-Reduction Plate Option***

Designed to reduce noise levels by 5 to 10 dBA, our integral plate fits into the valve body. It can be easily maintained using the same tools required for the seat retainer. It is perfectly suitable with all gases in the shaft-downstream direction, and the plate does not change the length of the valve.



### ***Integrated Control Valve Solution***

Operated by a diaphragm, piston, or rack-and-pinion actuator coupled with a Logix digital positioner, the MaxFlo 4 maintains high positioning accuracy, repeatability, controlled high speed and reliable response. With the advanced diagnostic solutions that can be seamlessly integrated into a host control and/or plant asset management system, along with state-of-the-art features and performance, the MaxFlo 4 is the most economical Eccentric Rotary Plug valve in the market.

### ***NR Diaphragm Rotary Actuator***

The Flowserve NR diaphragm rotary actuator is a rugged single-acting actuator designed to provide high performance, long life and reliability. The diaphragm actuator is very sensitive to small changes in air supply, which allows it to precisely move the valve plug without over shoot.



## **Unparalleled Service: Day or Night, Worldwide**

**Flowserve Quick Response Centers (QRCs) are equipped with thousands of parts, including OEM and Flowserve custom-built products. Each has the manpower and equipment to expedite time-sensitive repairs of any size.**



### **VR Spring Cylinder Rotary Actuator**

The Flowserve VR spring cylinder rotary actuator combines high torque and pneumatic stiffness with excellent throttling capabilities. These characteristics are designed into a lightweight, rugged and compact assembly, making the Flowserve spring cylinder rotary actuator an excellent choice for quarter-turn applications.



### **SuperNova Rack & Pinion Rotary Actuator**

The Flowserve SuperNova rack & pinion rotary actuator is designed for reliability, versatility and safety. Rugged, yet compact construction combined with technical solutions make this product extremely reliable in the severest of operating conditions



### **Logix 420 Digital Positioner**

The Logix 420 is the latest addition to the digital positioner family from Flowserve. When mounted to the MaxFlo 4 eccentric rotary plug control valve, Logix 420 provides the user with a cost competitive solution for the general service, explosion proof market.



For more information see document number LGENIM0106 at [www.flowserve.com](http://www.flowserve.com).

### **Logix 300MD+ Digital Positioner**

Easiest calibration and configuration of any positioner available. Single, push-button calibration and DIP switch configuration allow you to fully commission the positioner in a matter of minutes. Using ValveSight Software DTM brings the availability of 24/7 diagnostics.



For more information see document number LGENIM0059 and LGENIM3404 at [www.flowserve.com](http://www.flowserve.com).

### **Logix 500MD+ Series Digital Positioner**

To minimize your total cost of ownership and maximize productivity, Flowserve developed the Logix MD+ digital positioner. The Logix MD+ digital positioner allows for fast, simple commissioning, extremely accurate and reliable control, and diagnostic features that provide powerful and easy ways to determine when maintenance is required.



### **ValveSight™ Diagnostic Software – Prevention delivered**

ValveSight is a diagnostic solution for control valves that can be seamlessly integrated into a host control and/or plant asset management system. The power of ValveSight is the intelligent diagnostic engine -- which detects an emerging condition in the valve, actuator, positioner, and control signal -- that may indicate a performance, safety, or environmental problem. ValveSight advises which corrective actions to take to prevent a failure.





**United States**

Flowserve  
1350 N. Mt. Springs Parkway  
Springville, UT 84663  
USA  
Phone: +1 801 489 8611  
Fax: +1 801 489 3719

**Austria**

Flowserve Control Valves GmbH  
Kasernengasse 6  
9500 Villach  
Austria  
Phone: +43 (0)4242 41181 0  
Fax: +43 (0)4242 41181 50

**France**

Flowserve France S.A.S.  
BP 60 63307 Thiers Cedex  
France  
Phone: 33 4738 04266  
Fax: 33 4738 01424

**India**

Flowserve India Controls Pvt. Ltd  
Plot # 4, 1A, E.P.I.P, Whitefield  
Bangalore Kamataka  
India 560 066  
Phone: +91 80 284 10 289  
Fax: +91 80 284 10 286

**Singapore**

Flowserve Pte. Ltd.  
12 Tuas Avenue 20  
Republic of Singapore 638824  
Singapore  
Phone: +65 6879 8900  
Fax: +65 6862 4940

**Saudi Arabia**

Flowserve Abahsain Flow Control  
Co., Ltd.  
Makkah Road, Phase 4  
Plot 10 & 12, 2nd Industrial City  
Dammam, Kingdom of Saudi  
Arabia  
Phone: +966 3 857 3150 ext. 243  
Fax: +966 3 857 4243

**China**

Flowserve Fluid Motion and  
Control (Suzhou) Co., Ltd.  
No. 35, Baiyu Road  
Suzhou Industrial Park, Suzhou  
Jiangsu Province, P.R. 215021  
China  
Phone: 86 512 6288 8790  
Fax: 86 512 6288 8736

**FCD VLENBR0064-01-AQ** Printed in USA. November 2015. © 2015 Flowserve Corporation

**To find your local Flowserve representative:**

For more information about Flowserve Corporation,  
visit [www.flowserve.com](http://www.flowserve.com) or call  
USA 1 800 225 6989 or International +1 972 910 0774